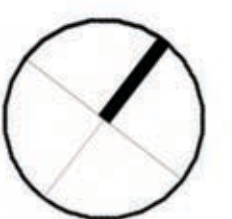
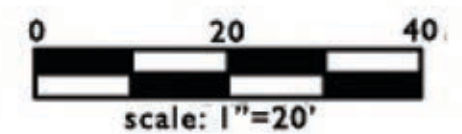
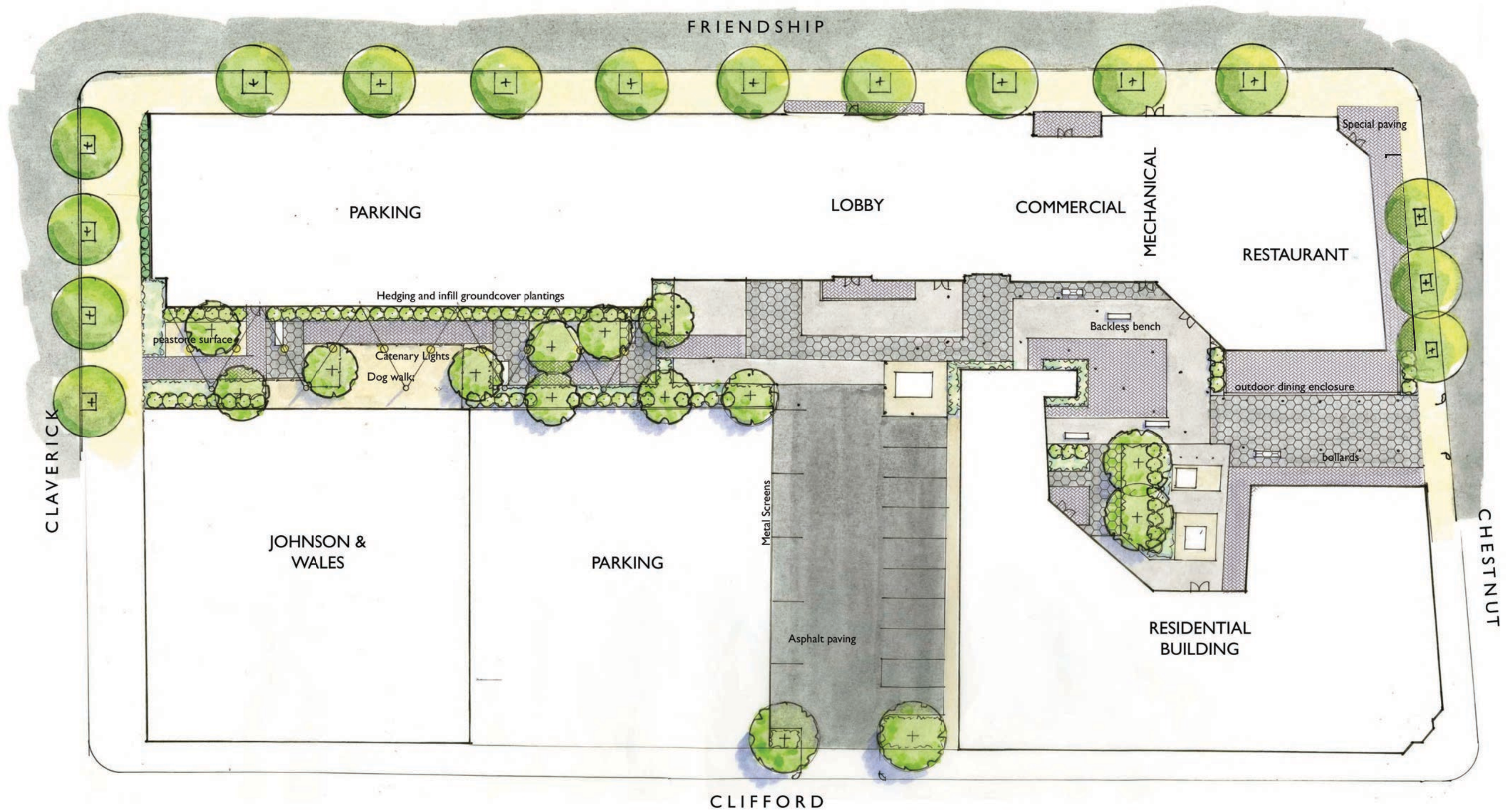








LIVING STREET: aka Alley 33.3  
-flush paving patterns highlight architecture, not car traffic  
-protective bollards for pedestrian safety and to guide vehicles  
-character-defining features: signature bench, repeating bollards







## Chestnut Common

Providence, RI | June 15, 2017 | Waldorf Capital Partnership | 16128 | © The Architectural Team, Inc.

Perspective View

tat

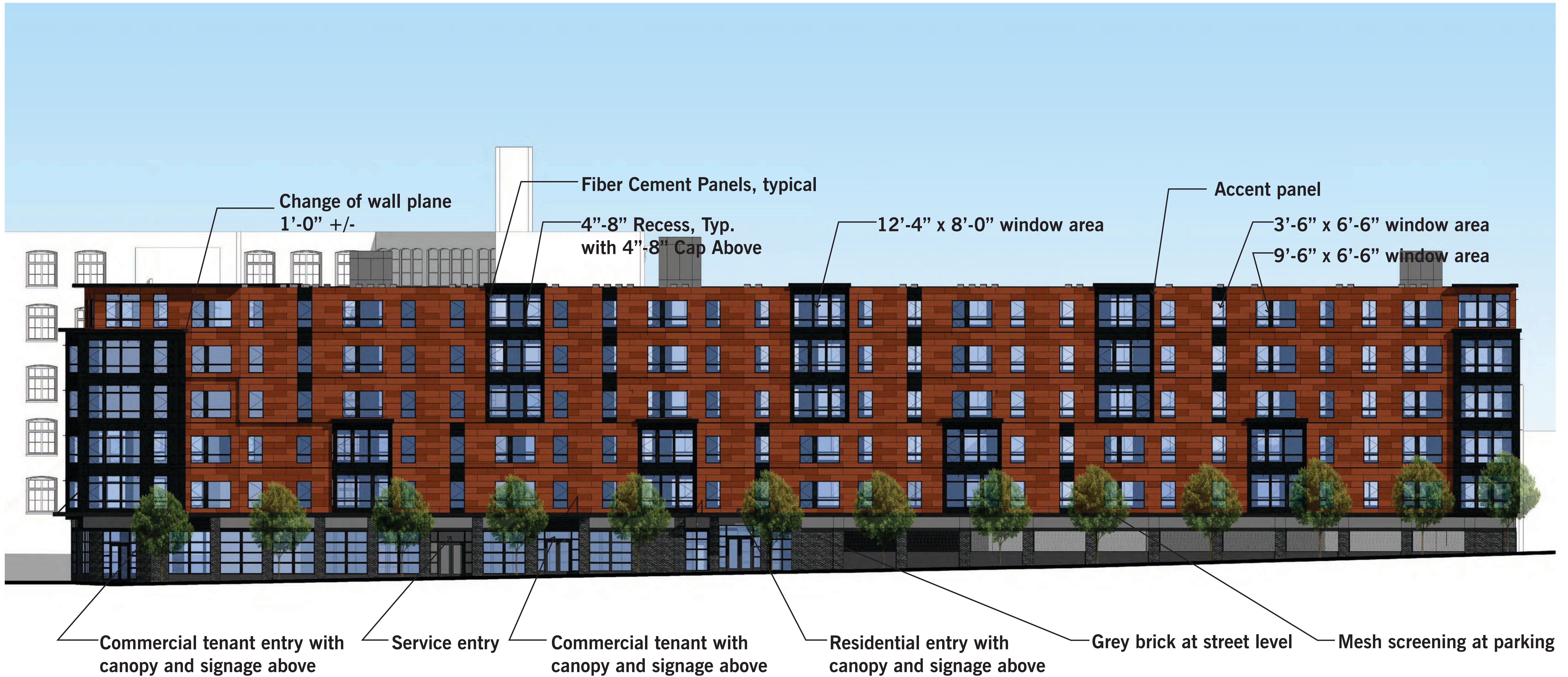




Chestnut Common

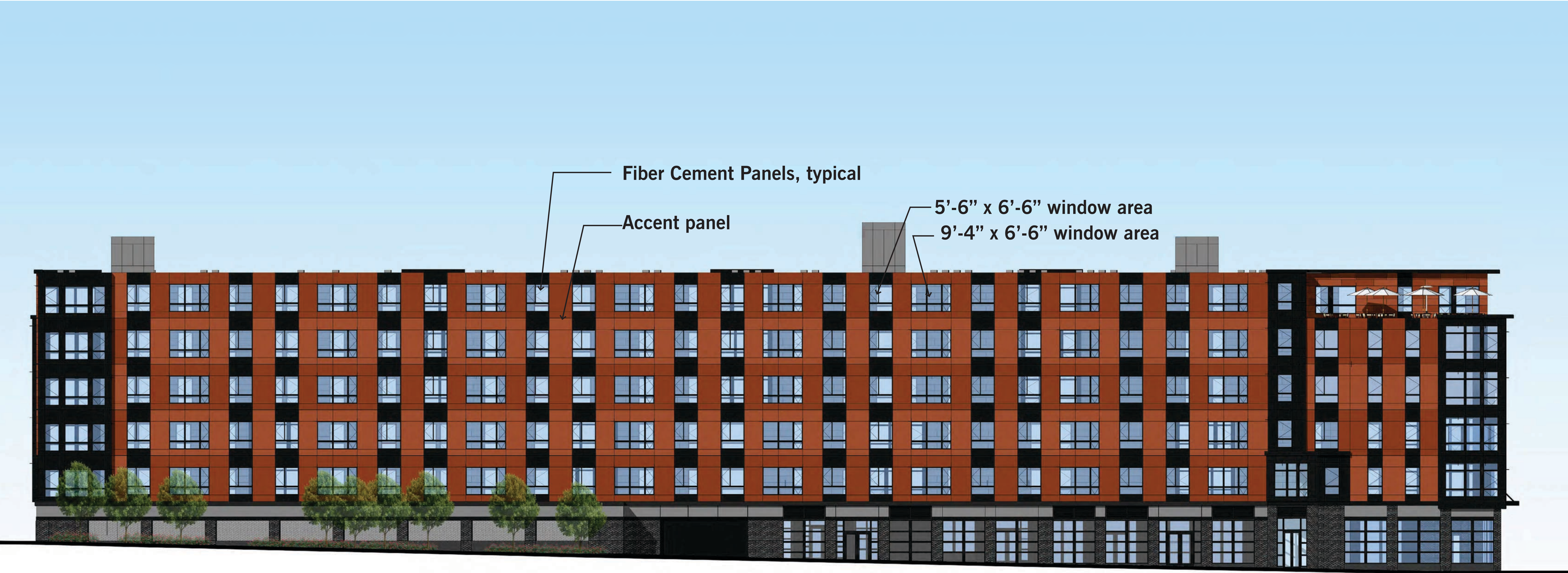
Perspective View - Chestnut Street





Friendship Street Elevation





Rear Courtyard Elevation





Chestnut Street Elevation



Claverick Street Elevation